

29°45'0"E

30°0'0"E

30°15'0"E

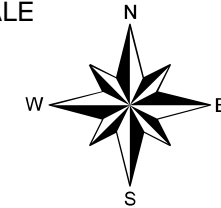
# TEMPERATURE -MEAN

## AMAJUBA DISTRICT MUNICIPALITY NEWCASTLE LOCAL MUNICIPALITY

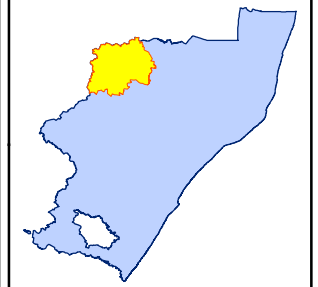
### NOTES

Mean temperature figures depict regional averages and not localised values

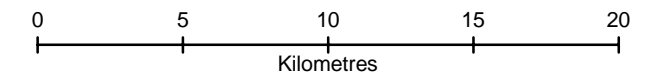
### SCALE



**1:260,000**



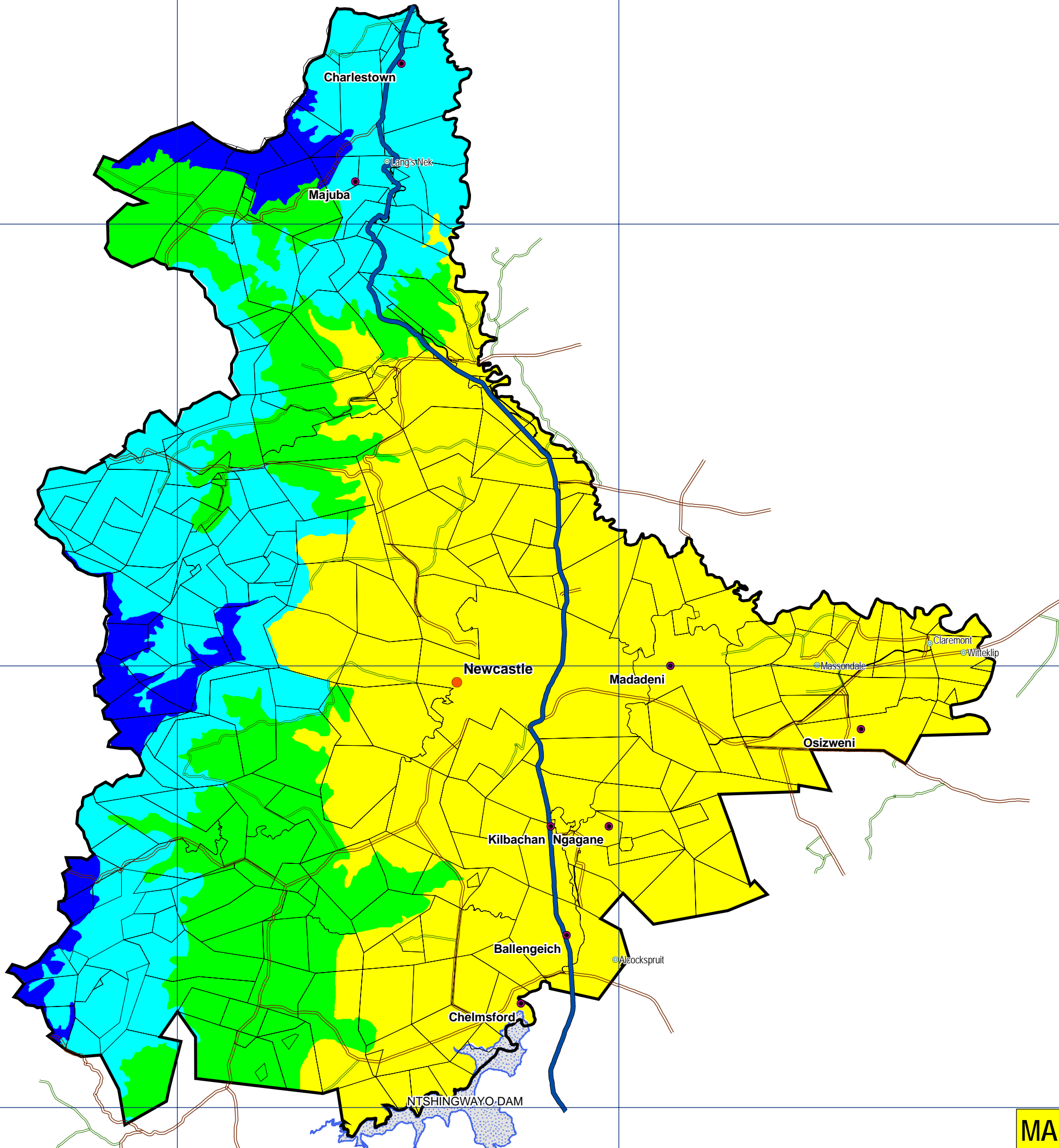
### SCALE BAR



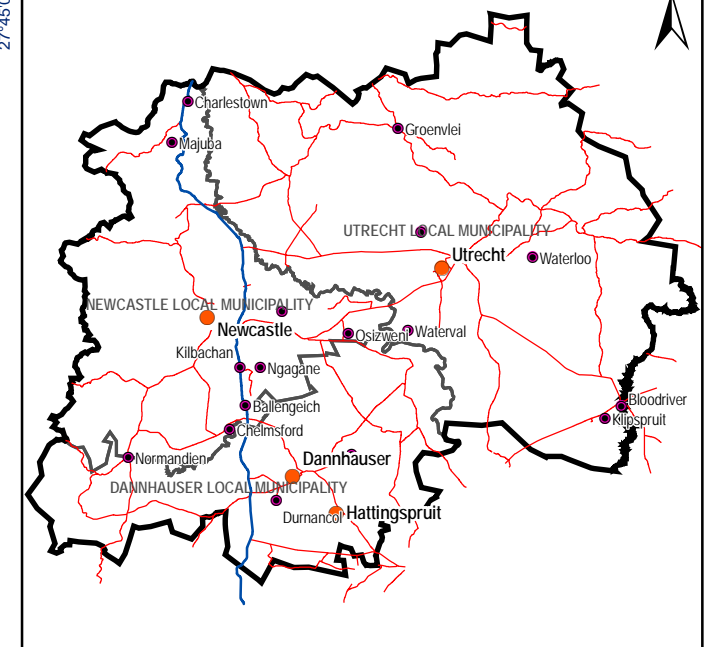
### LEGEND

#### Average Temperature (°c)

-1.0	16.1 - 17.0
-0.9 - 13.0	17.1 - 18.0
13.1 - 14.0	18.1 - 30.0
14.1 - 15.0	
15.1 - 16.0	



### LOCALITY MAP



**MAP 037**



# IBHONGO CONSORTIUM

Tel: 031 261 6225  
Fax: 031 261 6229  
E-mail: [ibhongo@telkomsa.net](mailto:ibhongo@telkomsa.net)  
Post Net Suite 279, Private Bag X10 Musgrave, 4062

29°45'0"E

30°0'0"E

30°15'0"E

27°30'0"S

27°30'0"S

27°45'0"S

27°45'0"S

28°0'0"S

28°0'0"S