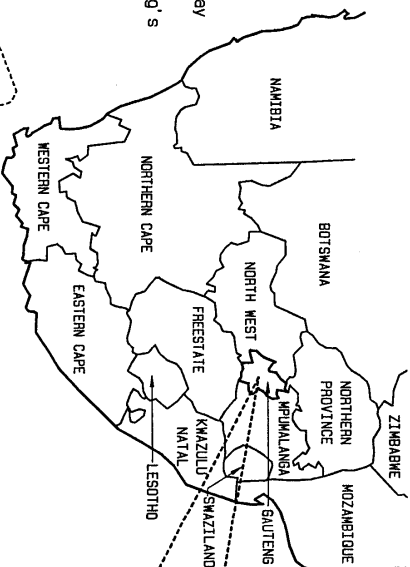


Detail 4.2.1  
SOUTH AFRICA - PROVINCES

Each Province has a Provincial Tourism Organisation (PTO)

NOTE :  
Provincial Tourism Organisations may adopt any name but the relevant organisation is the PTO eg. Gauteng's PTO is the Egoli Tourism Authority



Detail 4.2.2  
GAUTENG PROVINCE - Showing Regional Tourism Organisations (RTO's)

**KEY:**

- (Publicity Association)
- (Rural LTO Management Committee)
- ★ (Small Community)
- T3 (Tourist Routes)

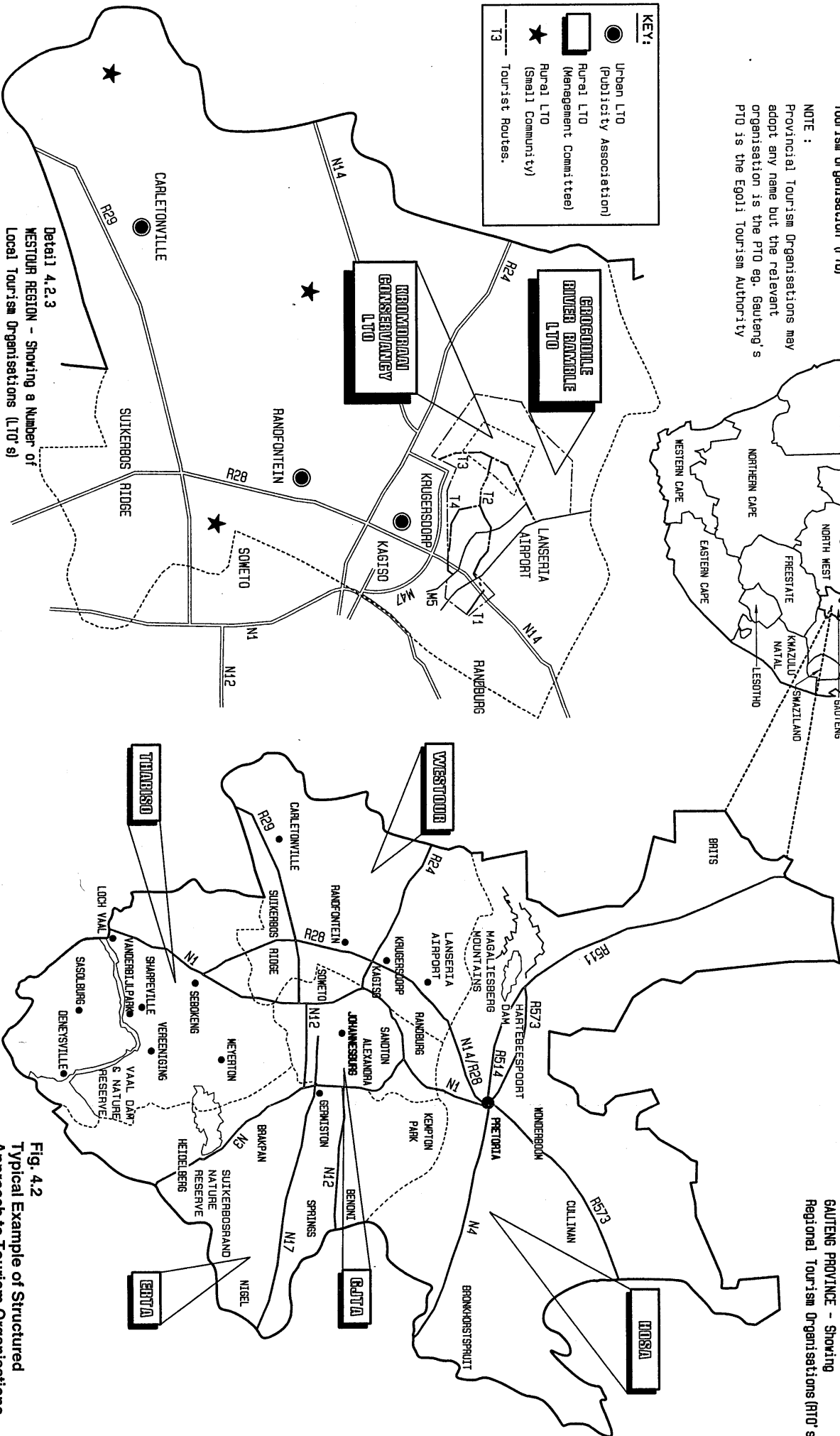


Fig. 4.2  
Typical Example of Structured Approach to Tourism Organisations

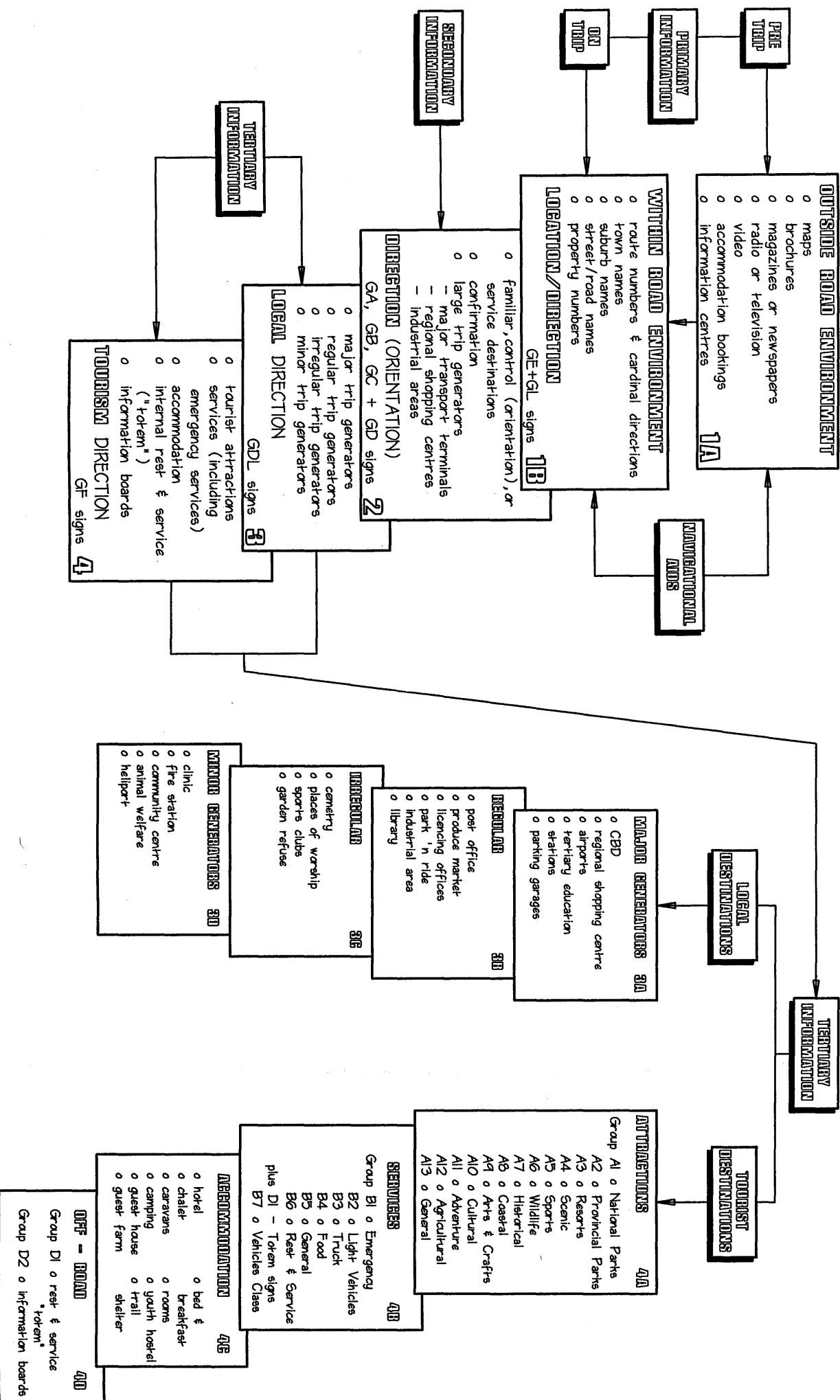


Fig. 4.3 The "Layer" Approach to Guidance Sign Information

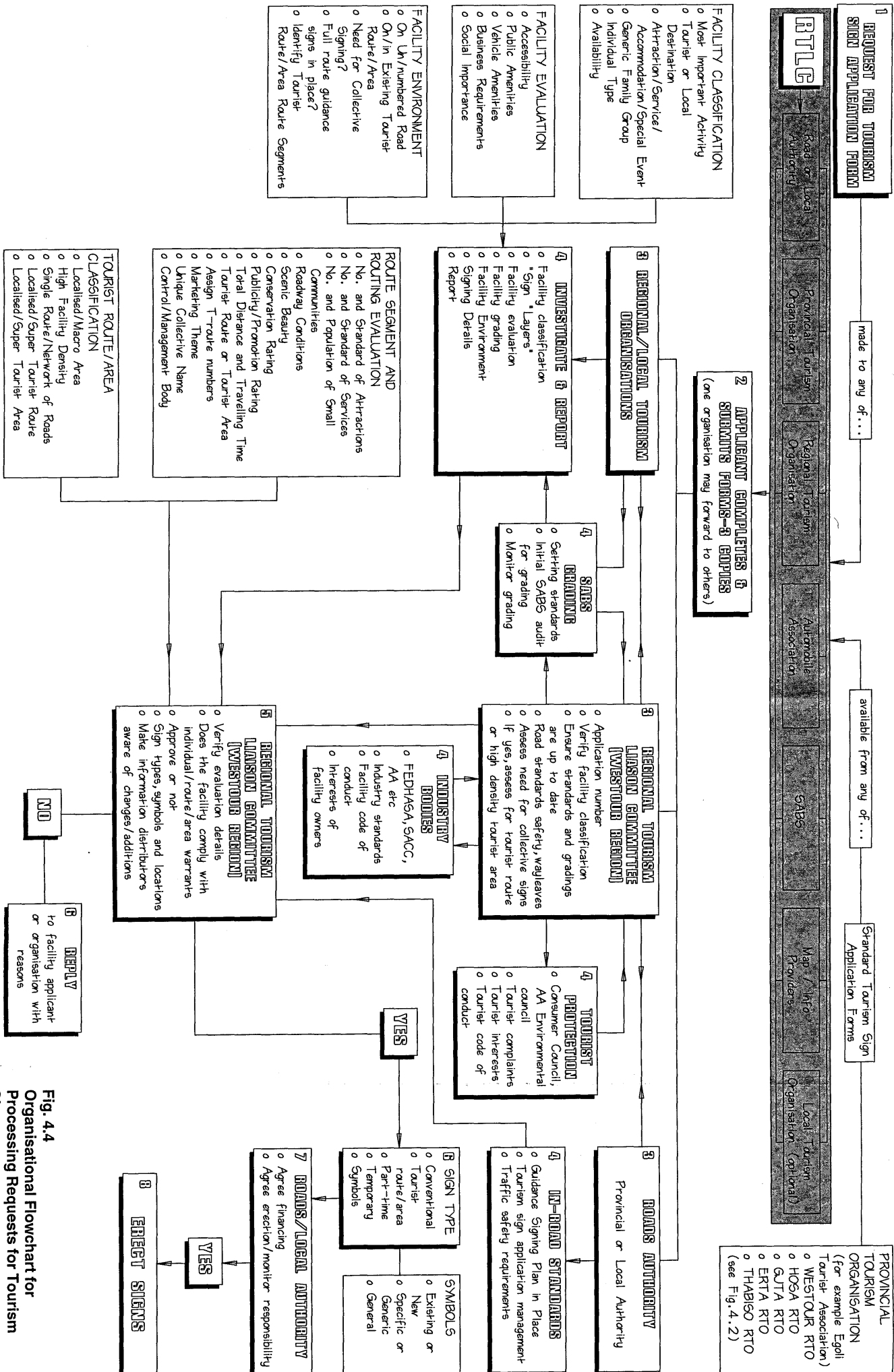


Fig. 4.4 Organisational Flowchart for Processing Requests for Tourism Signs

**PERMANENT TOURISM SIGNS**

**TOURIST ATTRACTIONS - GF1/GF2/GF3 Signs**

<ul style="list-style-type: none"> <li>Group A1 National Parks</li> <li>National Parks</li> </ul>	<ul style="list-style-type: none"> <li>Group A2 Provincial Parks</li> <li>Gauteng</li> <li>Free State</li> <li>Western Cape</li> <li>KwaZulu Natal</li> <li>Eastern Cape</li> <li>Northern Cape</li> <li>North West</li> <li>Northern Province</li> <li>Mpumalanga</li> </ul>	<ul style="list-style-type: none"> <li>Group A3 Resorts</li> <li>Country Club</li> <li>Hot Springs</li> <li>Inland Water</li> <li>Seaside/Beach</li> <li>Beach</li> <li>Berg/ Mountain</li> </ul>	<ul style="list-style-type: none"> <li>Group A4 Scenic</li> <li>Nature Reserve</li> <li>Natural Heritage</li> <li>Botanical Gardens</li> <li>Gardens (flower)</li> <li>Waterfall</li> <li>Lake or Dam (no water-sport)</li> <li>Viewpoint</li> <li>Forest (natural)</li> <li>State Forest</li> <li>Mountain/ Berg</li> </ul>	<ul style="list-style-type: none"> <li>Group A5 Sports</li> <li>Motor Racing</li> <li>Golf Course</li> <li>Equestrian</li> <li>Fishing</li> <li>Cricket Field</li> <li>Swimming Pool</li> <li>Sports Stadium</li> </ul>	<ul style="list-style-type: none"> <li>Group A6 Wildlife</li> <li>Conservancy</li> <li>Area</li> <li>Game/Farm Reserve</li> <li>Bird Park</li> <li>Zoo</li> <li>Stake Park</li> <li>Crocodile Park</li> <li>Rhino Park</li> <li>Lion Park</li> </ul>	<ul style="list-style-type: none"> <li>Group A7 Historical</li> <li>National Monument</li> <li>Museum</li> <li>Historic Mine</li> <li>Historic House</li> <li>Historic Railway</li> <li>Battlefield</li> <li>Historic Cemetery</li> <li>Geological Site</li> </ul>	<ul style="list-style-type: none"> <li>Group A8 Coastal</li> <li>Marine Reserve</li> <li>Maritime Museum</li> <li>Aquarium</li> <li>Whales</li> <li>Dolphins</li> <li>Light House</li> <li>Dockyard</li> <li>Boat Launch</li> <li>Fishing</li> <li>Crayfish</li> <li>Oceanarium</li> <li>Beach</li> </ul>	<ul style="list-style-type: none"> <li>Group A9 Arts &amp; Crafts</li> <li>Painting &amp; Drawing</li> <li>Pottery</li> <li>Jewellery</li> <li>Weaving &amp; Knitting</li> <li>Leatherwork</li> <li>African Arts</li> <li>Woodwork</li> <li>Metallwork</li> </ul>	<ul style="list-style-type: none"> <li>Group A10 Cultural</li> <li>Theatre</li> <li>Amphitheatre</li> </ul>	<ul style="list-style-type: none"> <li>Group A11 Adventure</li> <li>Hiking Trail</li> <li>Horse Trail</li> <li>4x4 Trail</li> <li>Bike Trail</li> <li>River Rafting</li> <li>Scuba Diving</li> <li>Balloonng</li> </ul>	<ul style="list-style-type: none"> <li>Group A12 Agricultural</li> <li>Wine Celler</li> <li>Wine Route/ Estate</li> <li>Showground</li> <li>Cherry Farm</li> <li>Ostrich Farm</li> <li>Scuba Diving with riding</li> <li>Fish Farm</li> <li>Butterfly Farm</li> </ul>	<ul style="list-style-type: none"> <li>Group A13 General</li> <li>Any attraction not covered by an individual attraction in Group A1 to A12.</li> <li>Animal Theme Park</li> </ul>
---	---	---	--	---	--	--	---	---	---	---	---	--

**SERVICES - GF1/GF2/GF3 Signs**

<ul style="list-style-type: none"> <li>Group B1 - Emergency Services</li> <li>Telephone</li> <li>Police</li> <li>Hospital</li> <li>First Aid</li> <li>SOS Phone</li> </ul>	<ul style="list-style-type: none"> <li>Group B2 - Light Vehicle Services</li> <li>Filling station</li> <li>Workshop</li> <li>Tow-in Service</li> </ul>	<ul style="list-style-type: none"> <li>Group B3 - Truck Rest &amp; Service</li> <li>Truck Service Area</li> </ul>	<ul style="list-style-type: none"> <li>Group B4 - Food Services</li> <li>Restaurant</li> <li>Take-away</li> <li>Refreshments</li> </ul>	<ul style="list-style-type: none"> <li>Group B5 - General Services</li> <li>Parking Area</li> <li>Toilets</li> <li>Shower</li> <li>Drinking Water</li> <li>Fireplace Facility</li> <li>Cooking Facility</li> <li>Picnic Area</li> <li>Tourist Information</li> <li>Handicapped Person Facility</li> <li>Roadside/ Curio Stall</li> <li>Post Office</li> <li>Rural Shop</li> </ul>	<ul style="list-style-type: none"> <li>Group B6 - Rest &amp; Service Areas</li> <li>Rest Area - Class 1</li> <li>Rest Area - Class 2</li> <li>Rest Area - Class 3</li> <li>Service Area</li> </ul>	<ul style="list-style-type: none"> <li>Group B7 - Vehicle Class</li> <li>Motor Cars</li> <li>Caravans</li> <li>Buses</li> <li>Trucks</li> <li>Delivery Vehicles</li> <li>Motor Cycles</li> </ul>
--	--	---	---	---	--	--

**ACCOMMODATION - GF1/GF2/GF3 Signs**

- Group C1 - Accommodation
- Hotel, Motel, Inn
- Chalet
- Caravan Site
- Camp Site
- Guest House
- Bed & Breakfast
- Rooms
- Youth Hostel
- Trail Shelter
- Guest Farm

**PART-TIME ATTRACTIONS - GF17 Signs**

<ul style="list-style-type: none"> <li>REGULAR EVENTS / FIXED VENUE</li> <li>MONTHLY</li> <li>WEEKLY</li> <li>PERMANENT VENUES</li> </ul>	<ul style="list-style-type: none"> <li>SEASONAL</li> <li>eg. Flower show</li> </ul>	<ul style="list-style-type: none"> <li>MONTHLY</li> <li>eg. Raffles</li> <li>Fla Markets</li> </ul>	<ul style="list-style-type: none"> <li>WEEKLY</li> <li>eg. Fla Markets</li> </ul>	<ul style="list-style-type: none"> <li>PERMANENT VENUES</li> <li>eg. Conferences</li> <li>Training Courses</li> </ul>
---	---	---	---	---

**TEMPORARY TOURISM SIGNS**

<ul style="list-style-type: none"> <li>SPECIAL EVENTS - TGFF17 Signs</li> <li>Sport</li> <li>Shows</li> <li>Conferences</li> <li>Auctions</li> <li>Open Days</li> <li>Tournaments</li> <li>Festivals</li> <li>Gales</li> <li>Fairs</li> <li>Raffles</li> <li>Projects</li> </ul>
--

**NOTES:**

(1) From time to time additional tourist destination types may be added. This table illustrates the approved groupings with typical examples but will not be updated regularly. For the latest categories of tourist destination refer to the symbol lists in Subsection 4.3.10.

(2) The order of facilities in these lists, and the symbol order in Subsection 4.3.10, do NOT imply any priority of importance. If space for a sign, or on a sign-face, is limited the indication of Emergency Services should take priority over all other options.

**Table 4.2**  
Classification of Tourism Destinations for Signaling Purposes